

# DOME™ Sentry

## BMS/OT/IoT Cybersecurity Appliance

### Zero Trust Cybersecurity for BMS/OT/IoT Devices



#### Applications

- Building Automation
- Industrial IoT / ICS
- IP Video Surveillance
- Manufacturing
- Process Control

#### Key Features

- Zero-touch provisioning for quick and simple installation
- Mutual authentication to other authorized devices
- Protocol-agnostic to support numerous applications
- Data-logging for analytics and threat detection
- Crypto-agile for future-proof security
- Secures non-BACnet traffic to BACnet/IP devices to support enterprise services such as DNS, SMTP, and Radius

#### Key Benefits

- Real-time protection stops cyber attacks before they can happen
- Supports new and existing devices for easy add-on cybersecurity
- Blocks communication from unauthorized devices
- Prevents unauthorized replacement of protected devices
- No IT / Cyber expertise required to deploy and use

#### Product Overview

DOME is a SaaS-based cybersecurity solution for connected edge devices such as controllers, sensors, cameras, access control, actuators, and machines. DOME stops cyber attacks before they can happen and is a turnkey cybersecurity solution for easy deployment in new or existing networks. The DOME Sentry is a cybersecurity appliance for BMS/OT/IoT devices that do not have built-in security.

DOME Sentry enables retrofit cybersecurity by simply installing in front of existing devices, providing instant protection. As shown in Figure 1, a secure tunnel is established between a DOME Sentry and other authorized devices, and traffic between each device is encrypted to protect the data. Manufacturers can embed the DOME Client software into their devices for similar built-in security, and DOME Sentry can work with a mix of devices protected by DOME Sentry or DOME Client.

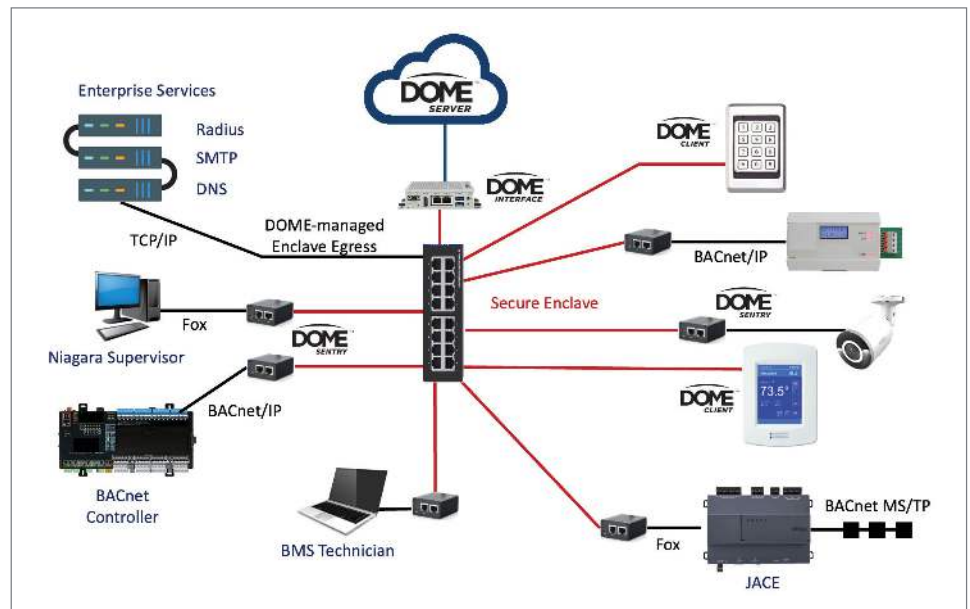


Figure 1 - BMS network diagram with DOME supporting multiple protocols and enterprise services.

## DOME Sentry Hardware and Software

The DOME Sentry is available in several models to support various installation and environmental requirements. The DOME Sentry software has two versions – one version is for BACnet devices that also supports additional protocols for related services, and the other version is for a broad range of non-BACnet, TCP/IP devices typically used for industrial automation.



Sentry 201



Sentry 204



Sentry 205



Sentry 401

Model	201	204	205	401
<b>Technical Specifications</b>				
Ethernet Ports	1 x 10/100/1000Mbps, 1 x 10/100Mbps	2 x 10/100/1000Mbps	3 x 10/100/1000Mbps	2 x 10/100/1000Mbps
Daisy-chain capable	No	No	Yes	No
Operating Temperature	-20°C - 70°C	0°C - 70°C	0°C - 70°C	-40°C - 70°C
Power	5V DC	5V DC	5/9/12 VDC	10 - 30 VDC
Power Connector	micro-USB	USB-C	USB-C	Terminal block
Dimensions	62D x 55W x 30H mm	62.5D x 62.5W x 29H mm	68D x 94.5W x 30H mm	100H x 93D x 30W mm
Quantum Resistant Methods	Optional	Optional	Optional	Optional
Popular Protocols Supported (see website or contact Veridify for complete list)	BACnet IP, BACnet SC, Modbus TCP, EtherNet/IP, PROFINET, MQTT, SNMP	BACnet IP, BACnet SC, Modbus TCP, EtherNet/IP, PROFINET, MQTT, SNMP	BACnet IP, BACnet SC, Modbus TCP, EtherNet/IP, PROFINET, MQTT, SNMP	BACnet IP, BACnet SC, Modbus TCP, EtherNet/IP, PROFINET, MQTT, SNMP
<b>Kit Part Numbers</b>				
BACnet/IP				
Base software	DOME.SY.00.021	DOME.SY.00.024	DOME.SY.00.025	DOME.SY.00.041
including PQ	DOME.SY.00.121	DOME.SY.00.124	DOME.SY.00.125	DOME.SY.00.141
TCP/IP				
Base software	DOME.SY.01.021	DOME.SY.01.024	DOME.SY.01.025	DOME.SY.01.041
including PQ	DOME.SY.01.121	DOME.SY.01.124	DOME.SY.01.125	DOME.SY.01.141

\* Quantum Resistant Algorithms secure against quantum and classic-based computing attacks

